



5604 ENTERPRISE 4 6428



5604 ENTERPRISE 4 6428 Model number: 57ENT28643BH18

3 beds • 2 baths • 1792 sq.ft. • 28' width • 64' depth

Our home building facilities invest in continuous product and process improvements. Plans, dimensions, features, materials, specifications and availability are subject to change without notice or obligation. Renderings and floor plans are representative likenesses of our homes and may differ from the actual homes. We invite you to tour a Home Center near you and inspect the highest value in quality housing available or call (910) 641-0100 to speak with a Home Consultant. Copyright 2017, CMH. All rights reserved.

<https://www.claytonhomesofwhiteville.com>

CLAYTON HOMES- WHITEVILLE

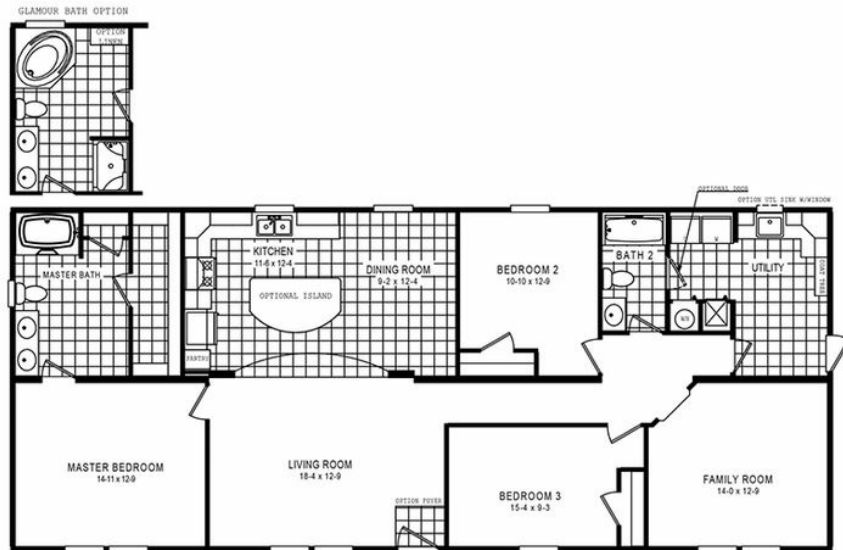
1233 J.K. POWELL BLVD
WHITEVILLE, NC 28472

Monday - Thursday: 9am to 6pm
Friday: 9am to 6pm
Saturday: 9am to 5pm
Sunday: Closed

(910) 641-0100



5604 ENTERPRISE 4 6428



5604 ENTERPRISE 4 6428 Model number: 57ENT28643BH18

3 beds • 2 baths • 1792 sq.ft. • 28' width • 64' depth

Our home building facilities invest in continuous product and process improvements. Plans, dimensions, features, materials, specifications and availability are subject to change without notice or obligation. Renderings and floor plans are representative likenesses of our homes and may differ from the actual homes. We invite you to tour a Home Center near you and inspect the highest value in quality housing available or call (910) 641-0100 to speak with a Home Consultant. Copyright 2017, CMH. All rights reserved.

<https://www.claytonhomesofwhiteville.com>

CLAYTON HOMES- WHITEVILLE

1233 J.K. POWELL BLVD
WHITEVILLE, NC 28472

Monday - Thursday: 9am to 6pm
Friday: 9am to 6pm
Saturday: 9am to 5pm
Sunday: Closed

(910) 641-0100